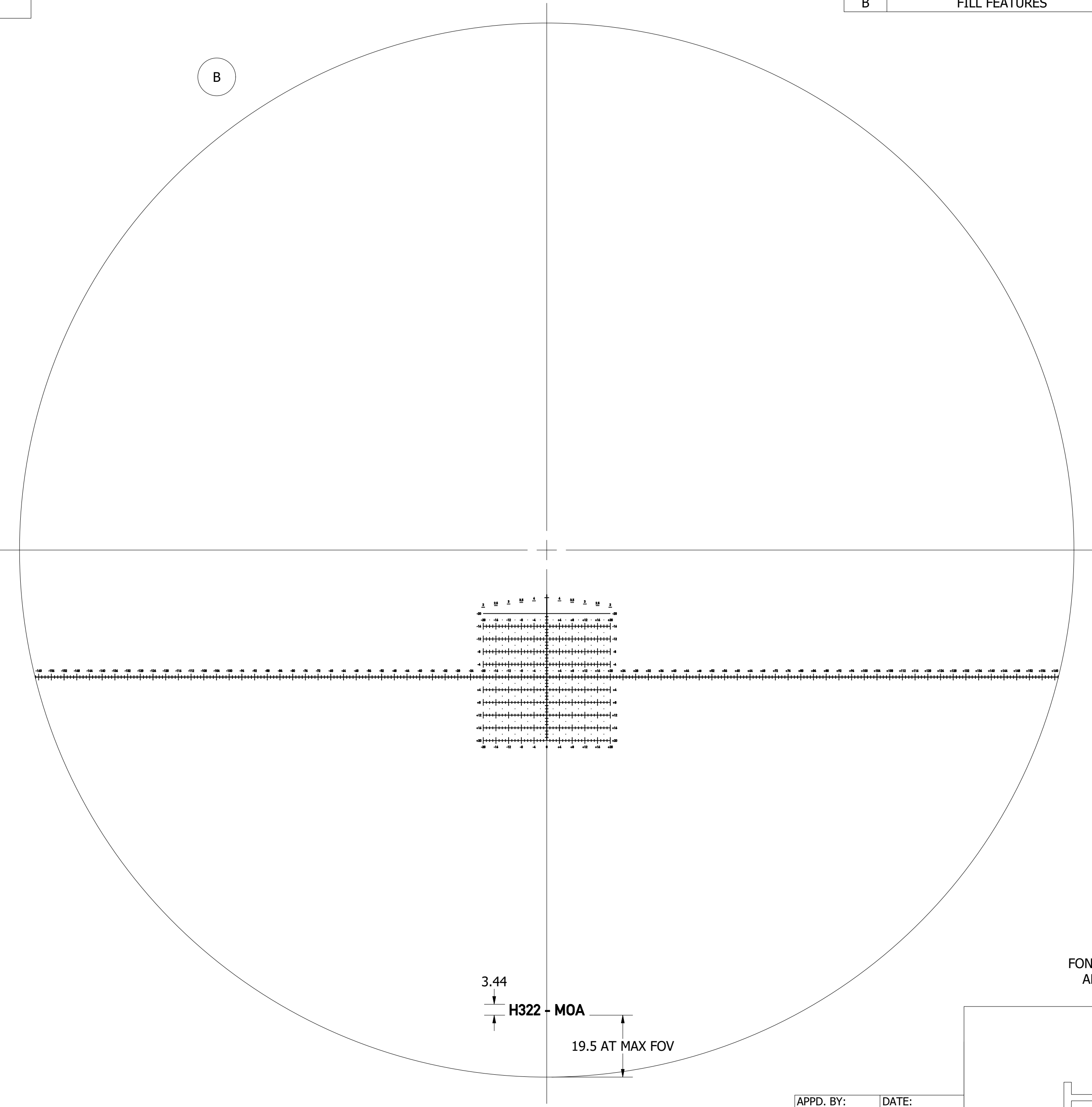
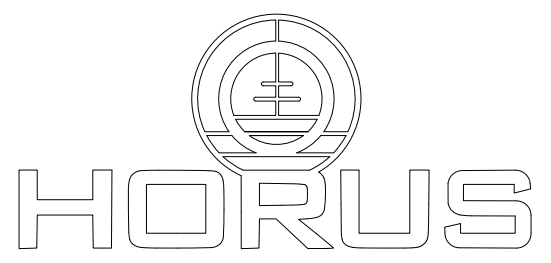


THIS PRINT IS THE PROPERTY OF HVRT CORP. ALL INFORMATION HERE ON IS CONFIDENTIAL. IT IS LOANED SUBJECT TO RETURN UPON DEMAND AND IN CONDITION THAT IT NOT BE REPLICATED OR USED IN ANY WAY DETRIMENTAL TO HVRT CORP.

REVISION HISTORY					
REV	DESCRIPTION	DWG. BY	DATE	ECO	APPROVED
A	ADDED MISSING "20"	SLH	1/16/2020	H11	CR
B	FILL FEATURES	SLH	2/25/2020	H12	CR



FONT IS DIN 1451 MITTLESCHRIFT
ALL DIMENSIONS ARE IN MOA



APPD. BY: K. Johnson	DATE: 8/13/2019
APPD. BY: N. Gallery	DATE: 7/30/2019

HVRT CORP.
336 HAZEN LANE
OROFINO, ID 83544

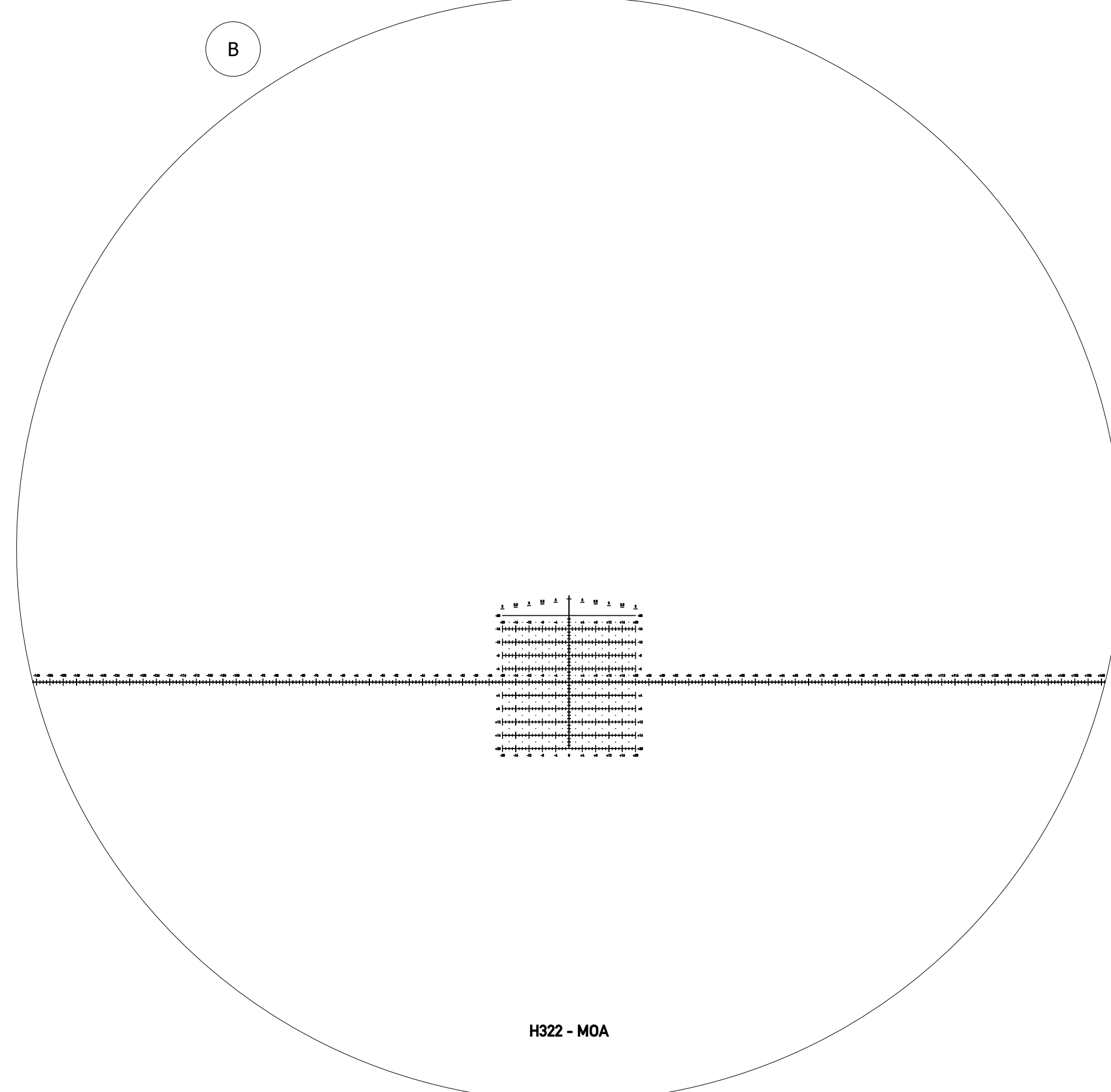
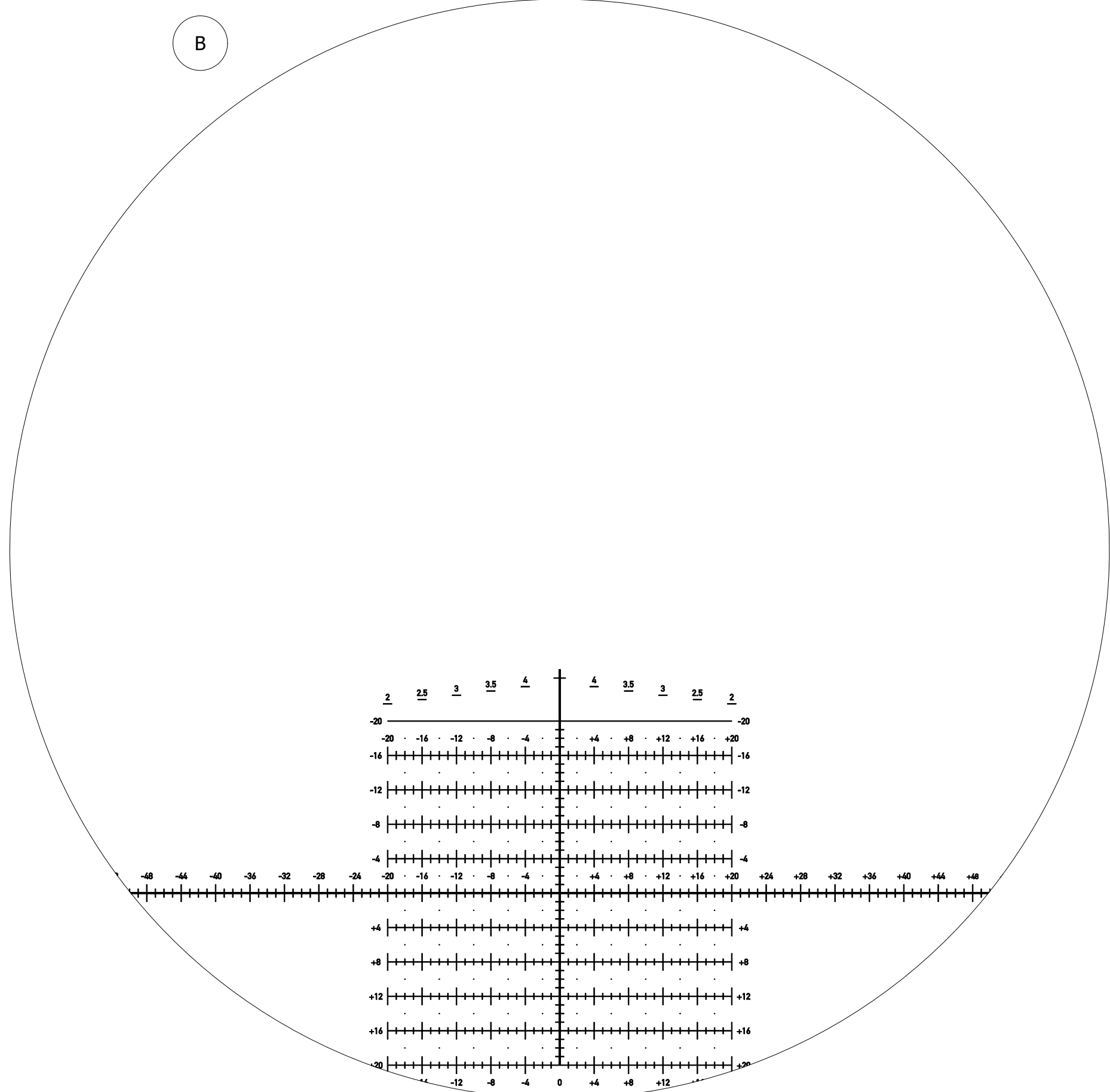
PART DESCRIPTION GENERIC LAYOUT H322-MOA		PART # H322-MOA	
DWG. BY: SLH	DATE: 5/14/2018	EO#	
		PLOT C	REV B
			SHEET 2 OF 3

THIS PRINT IS THE PROPERTY OF HVRT CORP. ALL INFORMATION HERE ON IS CONFIDENTIAL. IT IS LOANED SUBJECT TO RETURN UPON DEMAND AND IN CONDITION THAT IT NOT BE REPLICATED OR USED IN ANY WAY DETRIMENTAL TO HVRT CORP.

REVISION HISTORY					
REV	DESCRIPTION	DWG. BY	DATE	ECO	APPROVED
A	ADDED MISSING "20"	SLH	1/16/2020	H11	CR
B	FILL FEATURES	SLH	2/25/2020	H12	CR

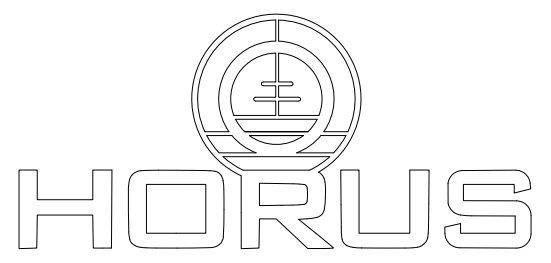
HIGH MAGNIFICATION VIEW

LOW MAGNIFICATION VIEW



H322 - MOA

FONT IS DIN 1451 MITTLESCHRIFT
ALL DIMENSIONS ARE IN MOA



APPD. BY: K. Johnson	DATE: 8/13/2019
APPD. BY: N. Gallery	DATE: 7/30/2019

HVRT CORP.
336 HAZEN LANE
OROFINO, ID 83544

PART DESCRIPTION GENERIC LAYOUT H322-MOA		PART # H322-MOA	
DWG. BY: SLH	DATE: 5/14/2018	ECO #	
		PLOT C	REV B
			SHEET 3 OF 3